

LAVATORY OUTLET - REMOVAL/INSTALLATION

1. Removal of the Lavatory Outlet

A. Reference Information

Reference	Designation
AMM TASK XX-XX-XX-910-801	Electrical/Electronic Safety Precautions

B. Tools and Equipment

Reference	Description
GSE XX-XX-XX	Tag, Circuit Breaker

NOTE: Refer to the XXXXX Listing to make sure to use the correct XXX configuration.

C. Setup

- (1) Obey all the electrical/electronic safety precautions (AMM TASK XX-XX-XX-910-801).
- (2) Open and tag the circuit breakers as follows:

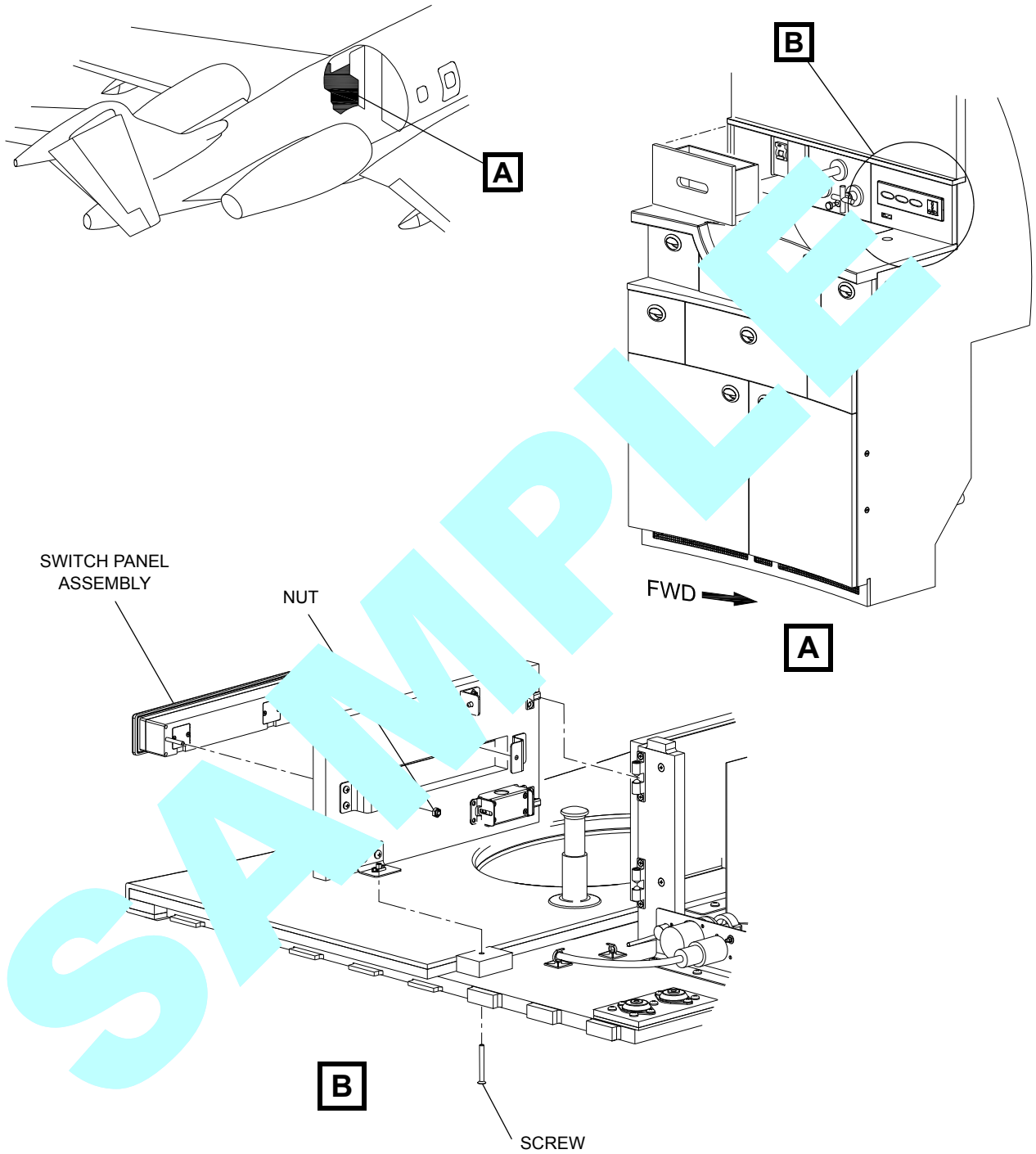
LOCATION	NAME	ZONE
AUX GCBP	OUTLETS	XXX
DC GCBP	SYSTEMS	XXX

- (3) Remove the cabinet panel where the outlet is located (secured with ball catches and screw).
- (4) The lavatory outlet and the water system reset switch are both part of the switch panel assembly.

D. Procedure

Refer to Figure 1.

- (1) Disconnect electrical connector P3037.
- (2) Disconnect the water system reset switch.
- (3) Put protective covers on the electrical connections.
- (4) Remove the nuts and washers securing the switch panel assembly to the mounting bracket.
- (5) Remove the switch panel assembly.



Copyright © 2008 by AEC, Inc. All rights reserved.

Lavatory Outlet - Removal/Installation
Figure 401

EFFECTIVITY: XXXX-SMM
Revision FI

2. Installation of the Lavatory Outlet

A. Reference Information

Reference	Designation
AMM TASK XX-XX-XX-910-801	Torquing of Threaded Fasteners

B. Tools and Equipment

Reference	Description
Commercially Available	Wrench, Torque

NOTE: Refer to the XXXXX Listing to make sure that you use the correct configuration.

C. Setup

- (1) Make sure that the aircraft is in the specified configuration for removal task.

D. Procedure

Refer to [Figure 401](#).

NOTE: Make sure that the surface is clean with no corrosion, paint, grease, or preservation fluids.

- (1) Put the switch panel in position.
- (2) Install the nuts and washers securing the switch panel assembly to the mounting bracket.
- (3) Fit electrical protective covers.
- (4) Connect electrical connector P3037.
- (5) Connect the water system reset switch.

Remove the tags and close the circuit breakers that follow:

LOCATION	CB NAME	ZONE
AUX GCBP	OUTLETS LAV	XXX
DC GCBP	WATER SYS LAV	XXX

- (7) Do an operational test of the 50Hz power system (SMM XX-XX-XX).
- (8) Torque the nuts securing the outlet assembly (AMM TASK XX-XX-XX-910-801).



E. Closeout

- (1) Put the cabinet panel in position (secured with ball catches and screw).
- (2) Remove all tools, equipment, and unwanted materials from the work area.

SAMPLE